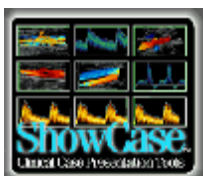


Trillium Technology, Inc.
448 Fifth Street
Ann Arbor, MI 48105
USA



Network ShowCase® Software

DICOM Conformance Statement

Revision 2.0
December, 2006

ShowCase Software versions 4.9.3 and higher

Revision History

Revision	Date	Author	Reason for Change
1.0	01/11/04	DRH	Initial version for marketed release of Network ShowCase.
1.1	02/11/04	SBS	Update after outside verification.
2.0	11/28/06	SBS	Update for 4.9.3 software – added support for saving annotated 8 palette color. No longer convert to RGB on save.

1	Introduction.....	4
1.1	Purpose of this Document.....	4
1.2	References and Definitions.....	4
1.3	Acronyms and Abbreviations.....	4
2	Network Conformance Statement.....	5
2.1	Introduction.....	5
2.2	Implementation Model.....	5
2.2.1	Application Data Flow Diagram.....	5
2.2.2	Functional Definition of Application Entity.....	6
2.2.3	Sequencing of Real World Activities.....	6
2.3	Application Entity Specifications.....	6
2.3.1	Network ShowCase acting as a Query/Retrieve SCU.....	6
2.3.1.1	Association Establishment Policies.....	6
2.3.1.2	Association Initiation by Real-World Activity.....	7
2.3.1.3	Association Acceptance Policies.....	9
2.3.2	Network ShowCase acting as a STORE SCP.....	9
2.3.2.1	Association Establishment Policies.....	9
2.3.2.2	Association Initiation by Real-World Activity.....	9
2.3.2.3	Association Acceptance Policies.....	9
2.4	Communication Profiles.....	11
2.4.1	Supported Communications Stacks.....	11
2.4.2	OSI Stack.....	11
2.4.3	TCP/IP Stack.....	11
2.4.3.1	Physical Media Support.....	11
2.4.4	Point-to-Point Stack.....	11
2.5	Extensions/Specializations/Privatizations.....	11
2.6	Configuration.....	11
2.6.1	AE Title/Presentation Address Mapping.....	11
2.6.2	Configurable Parameters.....	12
2.7	Support of Extended Character Sets.....	12
3	MEDIA STORAGE CONFORMANCE STATEMENT.....	13
3.1	Introduction.....	13
3.2	Implementation Model.....	13
3.2.1	Application Data Flow Diagram.....	13
3.2.1.1	Description of the Data Flow Diagram for Any Windows Volume.....	13
3.2.2	Functional Definition of Application Entities.....	14
3.2.3	Sequencing of Real World Activities.....	14
3.2.4	File Meta Information for Implementation Class and Version.....	14
3.3	Application Entity Specifications.....	15
3.3.1	ShowCase Application Entity Specification.....	15
3.3.1.1	File Meta Information for ShowCase Application Entity.....	16
3.3.1.2	Real World Activities for the ShowCase Application Entity.....	17
3.4	Augmented and Private Application Profiles.....	19
3.5	Extensions/Specializations/Privatizations.....	19
3.6	Configuration.....	19
3.7	Support of Extended Character Sets.....	19

1 Introduction

1.1 Purpose of this Document

This document is the DICOM Conformance Statement for the Network ShowCase medical image viewing software developed by Trillium Technology, Inc, Ann Arbor, Michigan, USA. Network ShowCase software running on a personal computer or laptop, provides the ability to review DICOM images and if desired, de-identify them and prepare them for export into PowerPoint presentations or teaching files.

Network ShowCase can query DICOM nodes for images, read images from DICOM exchange media or store images sent to it by DICOM image acquisition devices.

Part 2 of this conformance statement contains a detailed description of the **network** interactions between Network ShowCase and other imaging devices that conform to the DICOM 3.0 standard. Network ShowCase implements DICOM messaging using the Merge Technologies MergeCOM3 toolkit. Their conformance information is available to the public on their web site.

Part 3 of this conformance statement includes a description of ShowCase support for DICOM **exchange media**. All installed versions of ShowCase (version that do not run from CDs/DVDs) read and write DICOM exchange media such as CDs, DVDs and MO disks.

1.2 References and Definitions

Digital Imaging and Communications in Medicine (DICOM) standard, parts 1 through 13 (NEMA PS 3.1-3.13).

1.3 Acronyms and Abbreviations

Symbols and abbreviations used in this conformance statement are defined in Digital Imaging and Communications in Medicine (DICOM) standard, parts 1 through 13 (NEMA PS 3.1- 3.13).

2 Network Conformance Statement

2.1 Introduction

This section describes the DICOM network interactions of the Network ShowCase software running on a personal computer.

2.2 Implementation Model

The Network ShowCase network interactions are described in this section divided into two separate roles: 1- as a Query/Retrieve SCU and 2- as an image Store SCP.

2.2.1 Application Data Flow Diagram

The following diagram shows the implementation model of Network ShowCase.

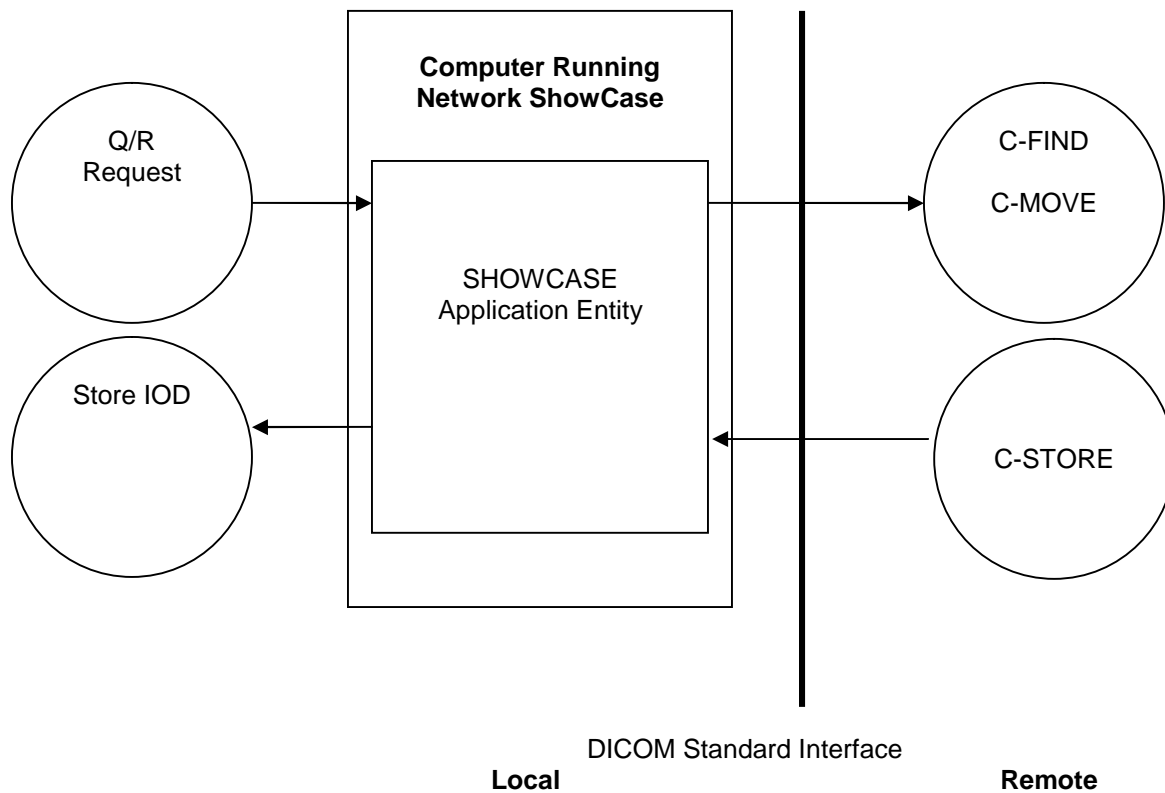


Figure 2.2-1 Network ShowCase Implementation Model

2.2.2 Functional Definition of Application Entity

All communications with remote DICOM applications is accomplished using the DICOM protocol over a network using the TCP/IP protocol stack.

Network ShowCase supports the following functions.

SCU	SCP
Query/Retrieve	
	Storage

Network Showcase:

- Accepts a DICOM association to store images
- Initiates a DICOM association in order to query a remote AE and request a C-FIND and C-MOVE.
-

2.2.3 Sequencing of Real World Activities

Typically, a user might query a networked DICOM server (Query SCU) for an image series, retrieve the series to the local machine (Store SCP) and view the images with ShowCase viewing features. The user might then de-identify an image (remove the patient name and other identifiers both in the image and the DICOM header) and save the file to DICOM media (Media FSU) or export the file in a consumer format for use in a PowerPoint presentation.

2.3 Application Entity Specifications

2.3.1 Network ShowCase acting as a Query/Retrieve SCU

The Network ShowCase Application Entity provides standard conformance to the following DICOM V3.0 SOP Classes as an SCU.

Network ShowCase Supported SOP Classes for Query / Retrieve		
Function	SOP Class UID	SOP Class Name
Query/Retrieve	1.2.840.10008.5.1.4.1.2.2.1	Study Root Query/Retrieve Model - FIND
Query/Retrieve	1.2.840.10008.5.1.4.1.2.2.2	Study Root Query/Retrieve Model - MOVE

2.3.1.1 Association Establishment Policies

The Network ShowCase Application initiates an association with a configured DICOM query node. It does not accept query/retrieve associations.

2.3.1.1.1 General

The DICOM Application Context Name that is proposed by Network ShowCase is 1.2.840.10008.3.1.1.1. The services offer a maximum PDU size of 28672 bytes upon association initiation. There is no limit on the number of Presentation Context Items that will be proposed.

2.3.1.1.2 Number of Associations

The Network ShowCase Application opens one association at a time as a Query/Retrieve SCU.

2.3.1.1.3 Asynchronous Nature

The Network ShowCase Application does not support asynchronous query operations.

2.3.1.1.4 Implementation Identifying Information

The Implementation Class UID is: “1.2.840.113857.3”.

The Implementation Version String is: “SC4_MC3_330”.

2.3.1.2 Association Initiation by Real-World Activity

The Network ShowCase Application acting in its Query/Retrieve role initiates associations for the following activities:

- Querying a remote DICOM node for available series.
- Retrieval of series from a remote DICOM node.
- Testing that it can establish an association with a remote DICOM node for Query/Retrieve.

2.3.1.2.1 Real-World Activity – DICOM Query**2.3.1.2.1.1 Associated Real World Activity - DICOM Query**

The user selects a configured query node and then sets the selection criteria to use in the query request. The user interface displays the results of the query by showing one line of description for each series that matches the criteria.

2.3.1.2.1.2 Proposed Presentation Contexts - DICOM Query

The Network ShowCase Application proposes the Presentation Contexts shown below.

Network ShowCase Proposed Presentation Contexts - Query					
Abstract Syntax Name	Abstract Syntax UID	Transfer Syntax Name	Transfer Syntax UID	Role	Extended Negotiation
Study Root Query Retrieve Information Model - FIND	1.2.840.10008.5.1.4.1.2.2.1	Implicit VR, Little Endian; Explicit VR, BE; Explicit VR, LE;	1.2.840.10008.1.2	SCU	None

2.3.1.2.1.3 SOP Specific Conformance to Study Root Query Retrieve SOP Class

The Network ShowCase Application uses a Study Root C-Find as defined in DICOM 3.0 Part 4 to query for images. All Required (R) and Unique (U) and some Optional (O) Study and Series level keys are used as shown in the following table.

Data Level	Description	Tag	Type
Study	Patient Name	(0010,0010)	R
Study	Patient ID	(0010,0020)	R
Study	Study ID	(0020,0010)	R
Study	Study Instance UID	(0020,000D)	U

Study	Accession Number	(0008,0050)	R
Study	Study Date	(0008,0020)	R
Series	Series Modality	(0008,0060)	R
Series	Series Number	(0020,0011)	R
Series	Series Instance UID	(0020,000E)	U
Series	Number of Series Related Instances	(0020,1209)	O

2.3.1.2.2 Real-World Activity – Retrieve Series

2.3.1.2.2.1 Associated Real World Activity - Retrieve Series

The user selects one or more series of images that were listed from a Query and retrieves the selected series from the remote DICOM node.

If the DICOM query server supports “relational queries” and the user sets up the query settings to use relational queries, the images are retrieved much faster than a non-relational query.

2.3.1.2.2.2 Proposed Presentation Contexts - Retrieve Series

Network ShowCase Proposed Presentation Contexts - Retrieve					
Abstract Syntax Name	Abstract Syntax UID	Transfer Syntax Name	Transfer Syntax UID	Role	Extended Negotiation
Study Root Query Retrieve Information Model - MOVE	1.2.840.10008.5.1.4.1.2.2.2	Implicit VR, Little Endian	1.2.840.10008.1.2	SCU	None

2.3.1.2.2.3 SOP Specific Conformance to Study Root Query Retrieve SOP Class

Network ShowCase provides standard conformance for a MOVE at the series level.

2.3.1.2.3 Real-World Activity – Test Query/Retrieve Association

2.3.1.2.3.1 Associated Real World Activity - Test Association

To test the DICOM connectivity on the network, the user interacts with UI provided to check whether a Query/Retrieve association can be established with a selected DICOM node. This tests DICOM messaging and establishes whether the remote node is set up to allow Query/Retrieve from Network ShowCase.

2.3.1.2.3.2 Proposed Presentation Contexts - Test Association

Network ShowCase Proposed Presentation Contexts – Test Query/Retrieve Node					
Abstract Syntax Name	Abstract Syntax UID	Transfer Syntax Name	Transfer Syntax UID	Role	Extended Negotiation
Study Root Query Retrieve Information Model - FIND	1.2.840.10008.5.1.4.1.2.2.1	Implicit VR, Little Endian	1.2.840.10008.1.2	SCU	None

2.3.1.2.3.3 SOP Specific Conformance to Study Root Query Retrieve SOP Class

The Network ShowCase Application tests that it can successfully establish an association with the remote DICOM node for the purpose of doing a FIND. No actual FIND request is initiated.

2.3.1.3 Association Acceptance Policies

Network ShowCase does not accept any associations when acting in its Query/Retrieve SCU role.

2.3.2 Network ShowCase acting as a STORE SCP

The Network ShowCase Application provides standard conformance to the following DICOM V3.0 SOP Classes as a Store SCP.

Network ShowCase Supported SOP Classes for Image Store		
Function	SOP Class UID	SOP Class Name
Storage	1.2.840.10008.5.1.4.1.1.4	MR Image Storage
Storage	1.2.840.10008.5.1.4.1.1.1	Computed Radiography Image Storage
Storage	1.2.840.10008.5.1.4.1.1.2	CT Image Storage
Storage	1.2.840.10008.5.1.4.1.1.7	Secondary Capture Image Storage
Storage	1.2.840.10008.5.1.4.1.1.6.1	Ultrasound Image Storage
Storage	1.2.840.10008.5.1.4.1.1.3.1	Ultrasound Multi-Frame Image Storage
Storage	1.2.840.10008.5.1.4.1.1.20	Nuclear Medicine Image Storage
Storage	1.2.840.10008.5.1.4.1.1.12.1	X-Ray Angiographic Image Storage
Storage	1.2.840.10008.5.1.4.1.1.12.3	X-Ray Angiographic Bi-Plane Image Storage
Storage	1.2.840.10008.5.1.4.1.1.12.2	X-Ray Radiofluoroscopic Image Storage
Storage	1.2.840.10008.5.1.4.1.1.481.1	RT Image Storage
Storage	1.2.840.10008.5.1.4.1.1.128	Positron Emission Tomography Image Storage

2.3.2.1 Association Establishment Policies

Network ShowCase does not initiate associations when acting as a Store SCP. It accepts associations from any DICOM node for image storage.

2.3.2.2 Association Initiation by Real-World Activity

Network ShowCase does not initiate associations in it's role as an image Store SCP.

2.3.2.3 Association Acceptance Policies

Network ShowCase accepts associations from any DICOM node for storing images.

2.3.2.3.1 Image Storage

2.3.2.3.1.1 Associated Real World Activity

Network ShowCase accepts images from remote DICOM nodes and stores the IODs.

2.3.2.3.1.2 Accepted Presentation Context

Network ShowCase Proposed Presentation Contexts – Image Store				
SOP Class Name	SOP Class UID	Role	Extended Negotiation	Transfer Syntax
MR Image Storage	1.2.840.10008.5.1.4.1.1.4	SCP	None	See Storage List Below
Computed Radiography Image Storage	1.2.840.10008.5.1.4.1.1.1	SCP	None	See Storage List Below
CT Image Storage	1.2.840.10008.5.1.4.1.1.2	SCP	None	See Storage List Below
Secondary Capture Image Storage	1.2.840.10008.5.1.4.1.1.7	SCP	None	See Storage List Below
Ultrasound Image Storage	1.2.840.10008.5.1.4.1.1.6.1	SCP	None	See US List Below
Ultrasound Multi-Frame Image Storage	1.2.840.10008.5.1.4.1.1.3.1	SCP	None	See US - MF List Below
Nuclear Medicine Image Storage	1.2.840.10008.5.1.4.1.1.20	SCP	None	See Storage List Below
X-Ray Angiographic Image Storage	1.2.840.10008.5.1.4.1.1.12.1	SCP	None	See Storage List Below
X-Ray Angiographic Bi-Plane Image Storage	1.2.840.10008.5.1.4.1.1.12.3	SCP	None	See Storage List Below
X-Ray Radiofluoroscopic Image Storage	1.2.840.10008.5.1.4.1.1.12.2	SCP	None	See Storage List Below
RT Image Storage	1.2.840.10008.5.1.4.1.1.481.1	SCP	None	See Storage List Below
Positron Emission Tomography Image Storage	1.2.840.10008.5.1.4.1.1.128	SCP	None	See Storage List Below

Storage Transfer Syntaxes Supported

Transfer Syntax	Transfer Syntax UID
JPEG Lossless, NH,FOP (Process 14)	1.2.840.10008.1.2.4.70
Implicit Little Endian	1.2.840.10008.1.2
Explicit Big Endian	1.2.840.10008.1.2.2
Explicit Little Endian	1.2.840.10008.1.2.1

US Transfer Syntaxes Supported

Transfer Syntax	Transfer Syntax UID
RLE Lossless	1.2.840.10008.1.2.5
Implicit Little Endian	1.2.840.10008.1.2
Explicit Big Endian	1.2.840.10008.1.2.2
Explicit Little Endian	1.2.840.10008.1.2.1

US-MF Transfer Syntaxes Supported

Transfer Syntax	Transfer Syntax UID
JPEG Baseline (Process 1)	1.2.840.10008.1.2.4.50
Implicit Little Endian	1.2.840.10008.1.2
Explicit Big Endian	1.2.840.10008.1.2.2
Explicit Little Endian	1.2.840.10008.1.2.1

2.3.2.3.1.3 SOP Specific Conformance Storage SOP Classes

Network ShowCase provides standard conformance for a STORE for image SOPs. It maintains all private elements transferred with the image IODs.

2.4 Communication Profiles

2.4.1 Supported Communications Stacks

Network ShowCase provides DICOM V3.0 TCP/IP Network Communication Support as defined in Part 8 of the DICOM Standard.

2.4.2 OSI Stack

Not supported.

2.4.3 TCP/IP Stack

Network ShowCase uses the TCP/IP stack from the Microsoft Windows operating system.

2.4.3.1 Physical Media Support

Network ShowCase is not dependent on the physical medium over which the TCP/IP executes.

2.4.4 Point-to-Point Stack

Not Supported.

2.5 Extensions/Specializations/Privatizations

Network ShowCase has no extensions, specializations or privatizations of SOP Classes and Transfer Syntaxes.

2.6 Configuration

The configuration of the Network ShowCase software is stored in local files. Configuration information can be entered via the graphical user interface provided in setup screens.

2.6.1 AE Title/Presentation Address Mapping

The AE Title for each computer running Network ShowCase is configurable through the graphical user interface. The default value is SHOWCASE.

The following configuration information is required for each DICOM node that acts as a Query SCP for Network ShowCase:

- The AE Title
- The IP address
- The listening port number

This information is stored in a DICOM node information file.

2.6.2 Configurable Parameters

Not Applicable

2.7 Support of Extended Character Sets

Network ShowCase supports the following character sets:

- ISO-IR 6 (default) Default repertoire
- ISO-IR 100 Latin Alphabet No. 1

Network ShowCase does not support multi-byte characters.

3 MEDIA STORAGE CONFORMANCE STATEMENT

3.1 Introduction

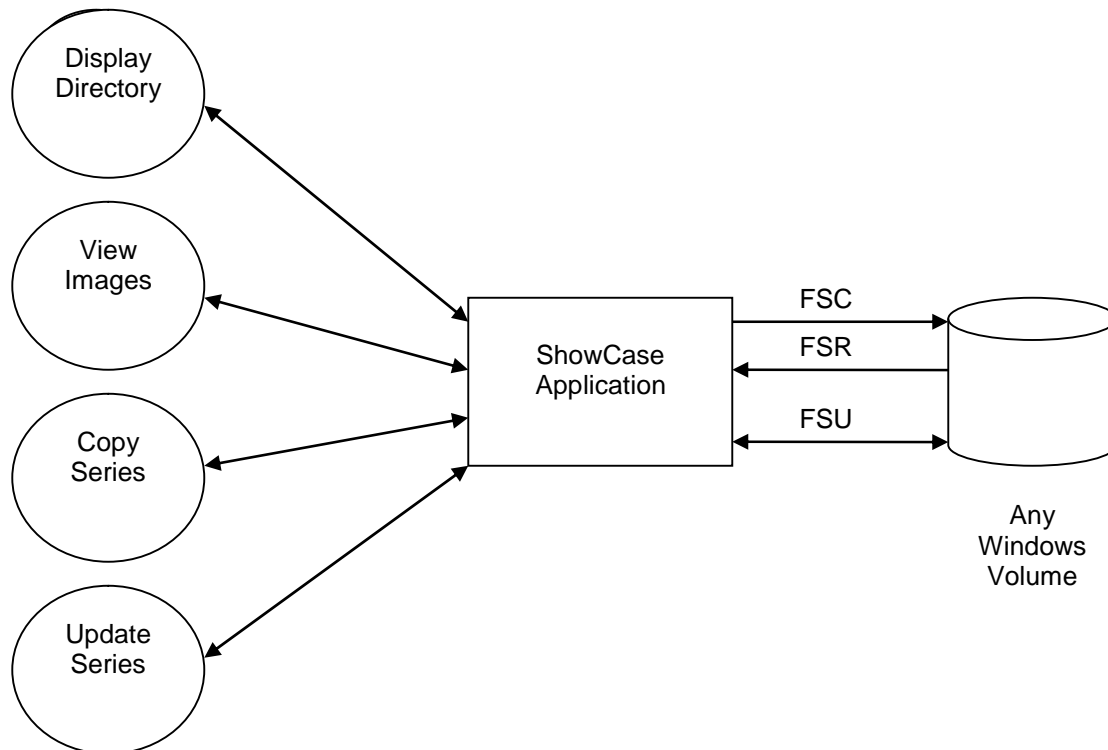
This section describes ShowCase compliance to the DICOM Media Interchange standards. It details the DICOM Media Storage Application Profiles and roles that are supported.

The ShowCase Application provides DICOM interchange capabilities on any Windows volume, regardless of its status as approved DICOM compliant media. The ShowCase Application is a software product that operates in the Windows environment. It creates, reads, writes, and updates image data in DICOM Media Interchange format on any windows volume available.

3.2 Implementation Model

3.2.1 Application Data Flow Diagram

The Basic and Specific Application models for any windows disk volume are shown in the following diagram.



3.2.1.1 Description of the Data Flow Diagram for Any Windows Volume

The ShowCase Application Entity (AE) handles the Display Directory, View Images, Copy Series, and Update Series functionality for any Windows volume. The ShowCase Application Entity (AE) allows the user to perform DICOM Services on the DICOM media by interacting with buttons and menu items in the graphical user interface provided by the software.

3.2.2 Functional Definition of Application Entities

The ShowCase software has only one Application Entity: the ShowCase Application Entity.

The ShowCase Application Entity supports the following functions:

- Display a directory listing of the DICOM File Set (FSR)
- Display images from a DICOM File Set (FSR)
- Copy images from a DICOM File Set (FSR)
- Update or Delete DICOM File Sets (FSU)
- Create DICOM File Set on any attached Window Volume

3.2.3 Sequencing of Real World Activities

A DICOM File Set must exist on the media for a DICOM File Set to be updated. Typically a user reads a directory and selects and views an image series. The user might de-identify an image (paint out the patient name or other identifying information and update the DICOM header information) and then write it to media in DICOM format or export it in a non-DICOM format for teaching purposes.

3.2.4 File Meta Information for Implementation Class and Version

The ShowCase Application Entity uses the following implementation identifying parameters:

- Implementation Class UID 2.16.840.113857.100.98.19

3.3 Application Entity Specifications

3.3.1 ShowCase Application Entity Specification

The ShowCase Application Entity provides standard conformance to the DICOM Interchange Option of the Media Storage Service Class. The Application Profiles and roles are listed in the following table. Note that the MOD AP's require that an MOD device is present on the computer running ShowCase. Likewise the CD and CDR AP's require the appropriate hardware/software on the computer.

ShowCase Exchange Media AP Support			
Supported AP's	Real-World Activity	Roles	SC Option
STD-US-ID-MF-MOD128 STD-US-SC-MF-MOD128 STD-US-ID-MF-MOD230 STD-US-SC-MF-MOD230 STD-US-ID-MF-MOD650 STD-US-SC-MF-MOD650 STD-US-SC-MF-CDR STD-XABC-CD STD-CTMR-CD	Display Directory	FSR	Interchange
STD-US-ID-MF-MOD128 STD-US-SC-MF-MOD128 STD-US-ID-MF-MOD230 STD-US-SC-MF-MOD230 STD-US-ID-MF-MOD650 STD-US-SC-MF-MOD650 STD-US-SC-MF-CDR STD-XABC-CD STD-CTMR-CD	View Images	FSR	Interchange
STD-US-ID-MF-MOD128 STD-US-SC-MF-MOD128 STD-US-ID-MF-MOD230 STD-US-SC-MF-MOD230 STD-US-ID-MF-MOD650 STD-US-SC-MF-MOD650 STD-US-SC-MF-CDR STD-XABC-CD STD-CTMR-CD	Copy Series	FSR	Interchange
STD-US-ID-MF-MOD128 STD-US-SC-MF-MOD128 STD-US-ID-MF-MOD230 STD-US-SC-MF-MOD230 STD-US-ID-MF-MOD650 STD-US-SC-MF-MOD650 STD-US-SC-MF-CDR	Update Series	FSU	Interchange
STD-US-ID-MF-MOD128 STD-US-SC-MF-MOD128 STD-US-ID-MF-MOD230 STD-US-SC-MF-MOD230 STD-US-ID-MF-MOD650 STD-US-SC-MF-MOD650	Create MOD	FSC	Interchange
STD-US-SC-MF-CDR	Create CD-R	FSC	Interchange

The ShowCase Application Entity provides support for SOP Classes shown in the following table. Note that “Uncompressed” means any of the three uncompressed transfer syntax designations; Implicit Little Endian, Explicit VR Little Endian, and Explicit VR Big Endian.

ShowCase SOP Class Support for Media Exchange			
Information Object Definition	SOP Class UID	Transfer Syntax	Transfer Syntax UID
DICOM Media Storage Directory	1.2.840.10008.1.3.10	Uncompressed	1.2.840.10008.1.2 1.2.840.10008.1.2.1 1.2.840.10008.1.2.2
X-Ray Angiographic Image	1.2.840.10008.5.1.4.1.1.12.1	JPEG Lossless Process 14	1.2.840.10008.1.2.4.70
		Uncompressed	1.2.840.10008.1.2 1.2.840.10008.1.2.1 1.2.840.10008.1.2.2
Ultrasound Image Storage	1.2.840.10008.5.1.4.1.1.6.1	Uncompressed	1.2.840.10008.1.2 1.2.840.10008.1.2.1 1.2.840.10008.1.2.2
		RLE Lossless Image Compression	1.2.840.10008.1.2.5
		JPEG Lossy, Baseline	1.2.840.10008.1.2.4.50
Ultrasound Multi-frame Image Storage	1.2.840.10008.5.1.4.1.1.3.1	Uncompressed	1.2.840.10008.1.2 1.2.840.10008.1.2.1 1.2.840.10008.1.2.2
		RLE Lossless Image Compression	1.2.840.10008.1.2.5
		JPEG Lossy, Baseline	1.2.840.10008.1.2.4.50
CT Image	1.2.840.10008.5.1.4.1.1.2	JPEG Lossless Process 14	1.2.840.10008.1.2.4.70
		Uncompressed	1.2.840.10008.1.2 1.2.840.10008.1.2.1 1.2.840.10008.1.2.2
MR Image	1.2.840.10008.5.1.4.1.1.4	JPEG Lossless Process 14	1.2.840.10008.1.2.4.70
		Uncompressed	1.2.840.10008.1.2 1.2.840.10008.1.2.1 1.2.840.10008.1.2.2
SC Image	1.2.840.10008.5.1.4.1.1.7	JPEG Lossless Process 14	1.2.840.10008.1.2.4.70
		Uncompressed	1.2.840.10008.1.2 1.2.840.10008.1.2.1 1.2.840.10008.1.2.2

3.3.1.1 File Meta Information for ShowCase Application Entity

The ShowCase Source Application Entity Title is not stored.

3.3.1.2 Real World Activities for the ShowCase Application Entity

The ShowCase Application Entity is used for the following real world activities:

- Display Directory Listing – ShowCase acts as a File-Set Reader.
- Viewing of Images - ShowCase acts as a File-Set Reader.
- Copy Series - ShowCase acts as a File-Set Reader
- Modifying a Series - ShowCase acts as a File-Set Updater.

ShowCase allows users to modify the actual image pixels when producing teaching files. The user can erase image areas for de-identification or they can add annotation text and arrows. **WHEN IMAGE DATA HAS BEEN EDITED**, the new image photometric interpretation may change as shown in the table below. Any compressed images are re-compressed to accommodate the changed image pixels.

ShowCase Transformations When Modifying Image Pixels							
Original Image				Edited Image			
Compression	Photometric Interpretation	Bits	Samples	Compression	Photometric Interpretation	Bits	Samples
None	RGB	8	3	None	RGB	8	3
None	MONOCHROME2 MONOCHROME1	8	1	None	RGB	8	3
None	MONOCHROME2 MONOCHROME1	16	1	None	RGB	8	3
Lossless JPEG	MONOCHROME2 MONOCHROME1	8	1	None	RGB	8	3
Lossless JPEG	MONOCHROME2 MONOCHROME1	16	1	None	RGB	8	3
None	YBR_FULL	8	3	None	RGB	8	3
RLE	YBR_FULL	8	3	RLE	YBR_FULL	8	3
Baseline Lossy JPEG	YBR_FULL_422	8	3	Baseline Lossy JPEG	YBR_FULL_422	8	3
None	PALLETTE COLOR	8	1	None	PALETTE COLOR	8	1
None	PALLETTE COLOR	16	1	None	RGB	8	3

3.3.1.2.1 Real World Activity - Display Directory

The ShowCase Application is an FSR when reading the directory of a Windows volume. It displays the information as a list of Patients, Studies, or Series.

3.3.1.2.1.1 Media Storage Application Profile for the RWA - Display Directory

For the list of Application Profiles that invoke this AE for the Display Directory RWA, see Section 3.3.1. There are no extensions or specializations.

3.3.1.2.2 Real World Activity - View Images

The ShowCase Application is an FSR when a user is viewing images from the CD, MOD or other media.

The ShowCase Application supports the following image formats for viewing images. Note that "Uncompressed" means any of the three uncompressed transfer syntax designations; Implicit Little Endian, Explicit VR Little Endian, and Explicit VR Big Endian.

ShowCase Image Formats - Viewing Support					
Photometric Interpretation	Transfer Syntax	Bits Allocated	Bits Stored	Samples Per Pixel	Planar Config.
MONOCHROME1 or MONOCHROME2	Uncompressed	8	8	1	N/A
	Uncompressed	16	16	1	N/A
	RLE Lossless Image Compression 1.2.840.10008.1.2.5	8	8	1	N/A
	JPEG Lossless, Non-Hierarchical (Process 14) 1.2.840.10008.1.2.4.70	8	8	1	N/A
	JPEG Lossy Baseline (Process 1) 1.2.840.10008.1.2.4.50	8	8	1	N/A
RGB	Uncompressed	8	8	3	0 - Chunky
	Uncompressed	8	8	3	1 - Planar
PALETTE COLOR	Uncompressed	8	8	1	N/A
	RLE Lossless Image Compression 1.2.840.10008.1.2.5	8	8	1	N/A
	Uncompressed	16	16	1	N/A
	RLE Lossless Image Compression 1.2.840.10008.1.2.5	16	16	1	N/A
YBR_FULL	Uncompressed	8	8	3	0 - Chunky
	RLE Lossless Image Compression 1.2.840.10008.1.2.5	8	8	3	0 - Chunky
	RLE Lossless Image Compression 1.2.840.10008.1.2.5	8	8	3	1 - Planar
YBR_FULL_422	JPEG Lossy Baseline (Process 1) 1.2.840.10008.1.2.4.50	8	8	3	1 - Planar

3.3.1.2.2.1 Media Storage Application Profile for the RWA - View Images

For the list of Application Profiles that invoke this AE for the View Images RWA, see Section 3.3.1. There are no extensions or specializations.

3.3.1.2.3 Real World Activity - Copy a Series

The ShowCase Application is an FSR when the user is copying a series from one Windows volume to another. The ShowCase Application copies any SOP Instance with a valid Directory Record in the DICOMDIR.

3.3.1.2.3.1 Media Storage Application Profile for the RWA - Copy a Series

For the list of Application Profiles that can invoke this AE for the Copy Series RWA, see Table 3.3 .1. There are no extensions or specializations.

3.3.1.2.4 Real World Activity – Add or Delete a Series

The ShowCase Application is an FSU using the Interchange option when adding or deleting series to a Windows volume. The ShowCase Application copies any SOP Instance it views to a Windows volume. The ShowCase Application can delete any study from the directory of a Windows volume that can be written.

3.3.1.2.4.1 Media Storage Application Profile for the RWA - Add or Delete a Series

For the list of Application Profiles that can invoke this AE for the Add or Delete a Series RWA, see Section 3.3.1. There are no extensions or specializations.

3.4 Augmented and Private Application Profiles

The ShowCase Application has no augmented or private Application Profiles.

3.5 Extensions/Specializations/Privatizations

The ShowCase Application has no extensions, specializations or privatizations of SOP Classes and Transfer Syntaxes.

3.6 Configuration

The ShowCase Application has no DICOM configuration

3.7 Support of Extended Character Sets

The ShowCase Application supports the following character sets:

- ISO-IR 6 (default) Default repertoire
- ISO-IR 100 Latin Alphabet No. 1