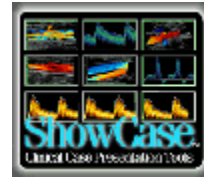


# Repairing DICOM Directories With ShowCase



ShowCase software release 4.6 and later includes a File menu option called “Repair DICOM Directory file”. This option should be used with care. It is meant to help you recover your DICOM directory when the directory has been accidentally deleted or damaged, or if image files have been manually deleted or added to a folder that is catalogued by a DICOM directory file.

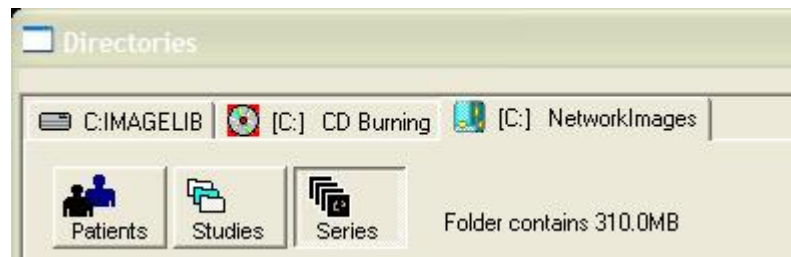
**Note** the following important warnings:

- 1- If your directory had “additional” information in it (eg thumbnail images representing the images in the studies) **THAT INFORMATION WILL BE LOST** in the repair operation. Only the basic image-series-study-patient relationships will be preserved in the new directory.
- 2- If you add a directory to a disk folder of images using this repair tool, the directory will not stay up to date if you are adding studies to the folder by manually copying them or exporting them into the folder. You would have to “repair” after each addition to keep the directory accurate.
- 3- You cannot “repair” the directory on a CD or DVD – make a new CD or DVD instead.

## To Replace or Repair a DICOM Directory

First, for safety, make a copy of your current directory file. It is a file called “DICOMDIR” (no extension) and it is located at the root of a disk (C:/DICOMDIR, or G:/DICOMDIR) or the root of your Network Images folder (C:/NetworkImages/DICOMDIR for example);

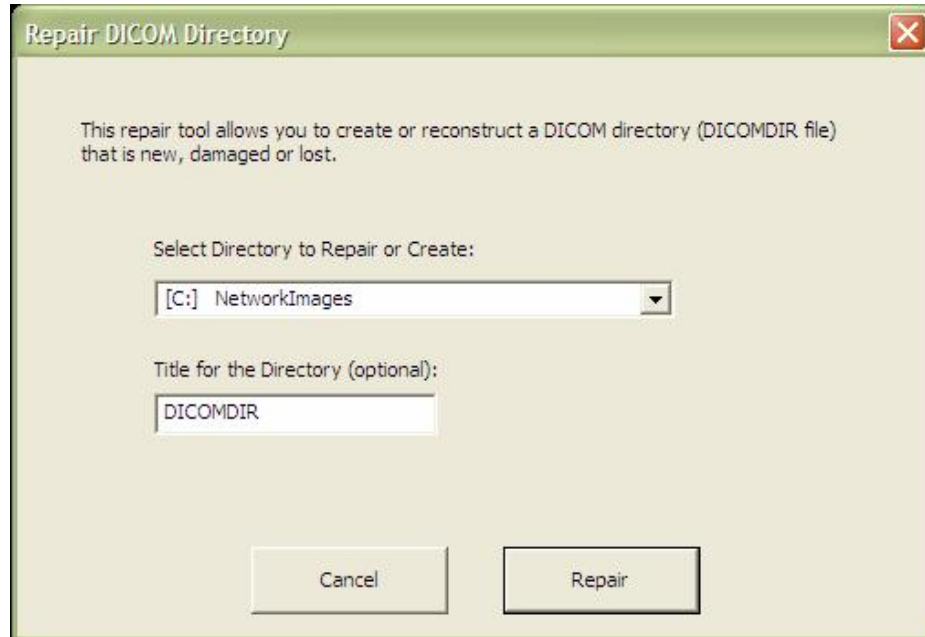
- 1- In the Directories Window, click on the tab for the directory you wish to repair. In the illustration below, a Network ShowCase user repairs the NetworkImages directory:



- 2- Select the File Menu options “Repair DICOM Directory File...”

Create New DICOM Directory...  
Repair DICOM Directory File...  
Edit List of Folder Directories...

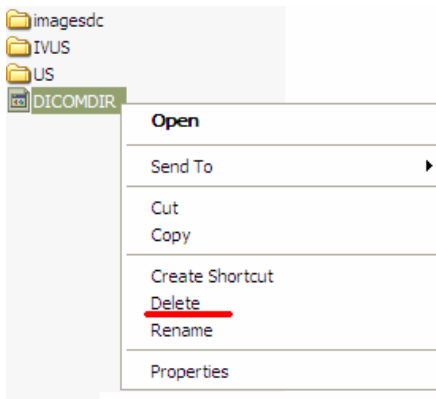
- 3- You will see a dialog that allows you to confirm your repair selection. You can also assign a title to the directory if you wish. (Many DICOM viewers do not show this directory title.)



- 4- Click on “Repair” and then OK the confirmation dialog. The Repair function may take a while to complete since the software reads all of the images in your image folder and reconstruct the relationships between the patients, studies, series and images. When the repair is finished, the Directories Window reappears with the repaired directory on the forward tab.

## To Remove a Directory

If you accidentally created a DICOM directory that you do not want, simply locate the DICOMDIR file using Windows Explorer (My Computer...), right click on it and select Delete. Be careful!



If you are using Network ShowCase: **Do not remove the directory** from your Network Images folder. Network ShowCase will re-create the directory, which might take considerable time depending on the number of images in the folder. If the directory is inaccurate, use the “Repair” tool.