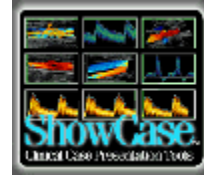


Quick Steps for Exporting Images Directly into PowerPoint[®] Slides with *Power ShowCase*[®]



With *Power ShowCase* or *Network ShowCase* you can display ShowCase windows on slides in PowerPoint. Images are full native DICOM quality and native compressed size AND you have ShowCase editing tools to use while you are designing your presentation.

NOTE: To show images in ShowCase Windows in PowerPoint you must have PowerPoint 2000 (or later) and Power ShowCase or Network ShowCase. The presentation must run on a computer that has ShowCase installed.

IMPORTANT NOTE: In PowerPoint 2007 presentations must be saved using the "PowerPoint Presentation 97-2003" file format.

1. Process images in ShowCase as usual (see the Processing Quick Steps):

- § You may wish to remove names, margin clips, or crop images in ShowCase. Work in ShowCase if you want to "Save" or "Save As" after processing. You can wait and process the images in your PowerPoint presentation if you prefer.

2. Select and export images:



- § If you are in a ShowCase Edit window, you can click the *Slide* button to export the current image to PowerPoint.
- § If you are in a series window, you can click on one or more images to select them (hold down the Ctrl key to select multiple images). Then click the *Slide* button on the toolbar, or select the File Menu item *Export Image to PowerPoint Slide*.
- § If you have a PowerPoint presentation open ShowCase will add slides (one per image exported) to the end of the presentation. The images will be centered in the slides, usually at full resolution size.
- § If you do not have a PowerPoint presentation open, ShowCase will open a new presentation and create slides with images centered on the slides.

3. Adjust your images in PowerPoint:


- § If necessary, add titles to your slides or move or resize the image as you would any slide object. (Note that resizing can introduce artifact. Avoid resizing when possible.)
- § YOU MUST RUN THE PRESENTATION to access ShowCase editing tools for your images.
- § When you run the presentation, images display in ShowCase windows.
- § If the image is a clip, the clip controller is available. You can play, stop, single step or speed up / slow down the clip. Also, you can stop and start the clip with either a single left click or a single right click over the image.

- § To access editing tools, double-click on the image. You should see the familiar ShowCase edit window. You can adjust brightness & contrast, crop, margin, erase names, etc.
- § Image appearance settings. While you are in the Edit window you will see the “PowerPoint” tab that accesses image appearance settings. They allow you to decide whether to automatically or manually start clips, whether to display the image label, clip controller or image frame, and whether to synchronize multiple clips on the same slide (eg for stress echo).

4. **Save your presentation:**

- § When you save your presentation, the ShowCase images and all of their presentation settings are saved in the presentation. You do not have image files to bundle with the presentation as you do with AVI and BMP files.
- § In PowerPoint 2007 presentations must be saved using the "PowerPoint Presentation 97-2003" file format.

5. **You can still export clips into AVI files if you want:**

- § First -- Why would you want to export an image from a slide??? There are two reasons that you might want to export an image from it's DICOM format in PowerPoint:
 - 1- If your presentation is getting too large to store and run efficiently, you might make some of your longer clips smaller by cropping them, and margining them and then saving them as compressed AVI files.
 - 2- You might want to put slides in a presentation that can play on a computer that does not have ShowCase, for example send the presentation to a colleague. If ShowCase is not installed on the computer, the ShowCase images cannot display. Either ShowCase would need to be installed, or the images would need to be converted and replaced on the slides as BMP and AVI files.
- § To export images – Double-click on the image and in the Edit window you can click the export button to export the current image in TIFF, JPEG, BMP or AVI format. 

Tips for displaying images in PowerPoint:

- 1- If you frequently create very large presentations, we recommend turning off auto-save in PowerPoint -- Save often manually instead. If your presentation gets very large, saving takes time and auto-save can interrupt at inconvenient times.
- 2- If your presentation gets too large, you may want to convert very long clips to compressed AVI files. Crop and margin the clips to further reduce size.
- 3- If you normally run your computer with the monitor in “256 colors”, you may see some flashing of colors in your presentations as PowerPoint and ShowCase struggle over which software controls the screen colors. Running in “True color” (24 bit or 32 bit color) will avoid this problem. Do not use “High color” (16 bit) when viewing medical images since it does not show enough gray values. ShowCase does not support 16-bit color display.