

Basic Image Viewing Tips

To set your viewing size preference and default double-click behavior

Select the Edit Menu, Preferences item to set the default viewing behavior on your computer. You can set the preferred image size separately for ultrasound (US), cardiac cath (XA) and all other modalities. Common choices are: A- “One-up with clip autoplay” which shows images at full size, one at a time with clips auto-playing as soon as they display. B- “Thumbnail” to see as many study images as possible on the screen. You can then double-click to enlarge the images of interest. C- “Medium size images” shows ultrasound images at familiar quarter size.

In the same preferences dialog, set the “tab” to activate when you double-click on an image. Double-clicking always shows the image at full size, but you can select the tool set to activate on double-click. If you usually want to perform measurements, select “Measurements”. If you often use ShowCase to create teaching images and want to de-identify the study by painting out patient information, select “Annotation Tools”. If you normally use double-click to adjust contrast, select “Window/Level Tools”. If you normally want to view the image without the distraction of tools select “no tools”.

To select a study to view from a DICOM disk

When you start ShowCase, the software looks at all “volumes” on your computer to see which ones include a DICOM Directory at the root level. ShowCase should find all DICOM formatted CDs, MODs or DVDs that are available on your machine. (Note: when you first insert a new CD or MOD you may have to wait a few seconds until it is recognized.). Each DICOM volume available on your machine appears on a tab. Click on the tab for the Study List you wish to view.



To select a study to view from an image file that is in DICOM format

If you have DICOM formatted images that are not organized on a DICOM disk with a directory, you can still view them using the Browse button:



Use the Browse button to point to a folder full of files to view. Or use the File Menu, Browse to DICOM File item to browse to one individual file.

Navigating through a series of images

ShowCase organizes images by DICOM “Series”. When there are multiple images in the series, you can position the vertical scroll bar to move through the images. Or you can use the keyboard arrow keys to step through rows of images, ‘Page Up’ & ‘Page Down’ keys to step through pages of images and the *Home* and *End* keys to jump to the beginning and end of the series.

Tip: You can stop and start clips by right clicking on the clip. This may be easier than using the start button on the clip controller.

To select a new study

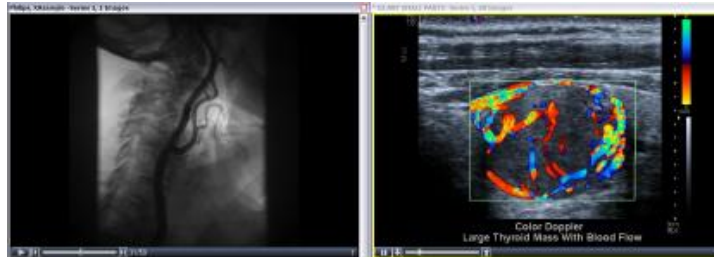
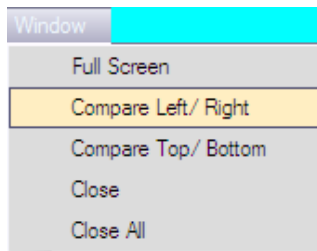


When you have finished looking at a study and want to move to a new study, close the study by clicking on the close box in the upper right corner, or by selecting the menu item File: Close. Or if you want more than one study displayed, click on the *Study List* button to select another patient study or series of images.

Comparing studies or navigating through a set of studies/series.



If you have more than one series window open, you can navigate through the series windows by using the *Next Series* and *Previous Series* buttons at the top of the screen. You can also view two studies next to each other in Compare mode. Click on the *Window* menu to select a method for arranging the Series windows. You can compare left/right or top/bottom.

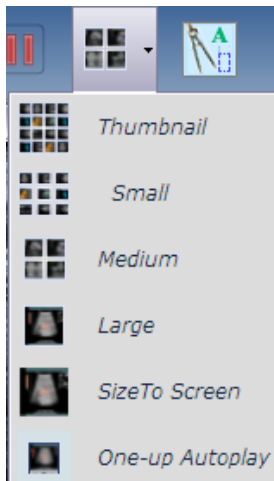


To reset image contrast and brightness



Double-click on the image and if necessary, select the 'Contrast/Brightness' tab to readjust the window, level, or gamma correction as desired. If you export an image (AVI or BMP for example) the exported image will keep the contrast settings. To apply the same settings to all of the images in the series, check the "Apply to All" button. Apply to All

To change the size of displayed images



To change the size of the images you are displaying, use the toolbar size drop-down to select a new viewing size or click F7. (Use the menu item Edit: Preferences to change the default size.)

You can use the F9 function key to toggle between "One Up Autoplay" and Thumbnails.

Double-click on the image to view it at full acquired resolution.

For intravascular ultrasound images (IVUS) you can select ILD display to show the lateral view construction.

Export, make slides, annotate and crop images, rearrange images, etc.

See the Quick Guide "Processing Images" for instructions on editing and exporting.