

ShowCase Image Viewing Keyboard Controls

Setting Preferences: You can set the default image size using the menu item Edit: Preferences. In this Preferences dialog you can also decide what tools, if any, to display when you double-click on an image (none, adjust contrast, annotation tools, measurement tools or DICOM header information).

Useful Keyboard Controls for Image Viewing

Key(s)	Action
Scroll wheel	If you have a scroll wheel on your mouse, it can be used to scroll thru the images in a series, or thru entries in a long directory.
Right-click	Start/stop a clip playback
Dbl-click	Open Edit Window to show image full size and access tools to modify image (contrast, annotation, margins, speed)
Ctrl-A	Select All images
Ctrl-O	Open Directories Window to select a new study
Ctrl-P	Print the current series of images
F1	Show the Help Dialog
F7	Move to the next image size (cycles thru all sizes)
F9	Toggle to/from "one-up auto-play"
Pg Up	Move to the next screen full of images
Pg Down	Move to the previous screen full of images
Home	Move to the first image in the set
End	Move to the last image in the set
↑ (up arrow)	Move up one row of images
↓ (down arrow)	Move down one row of images
Alt-FX	Exit

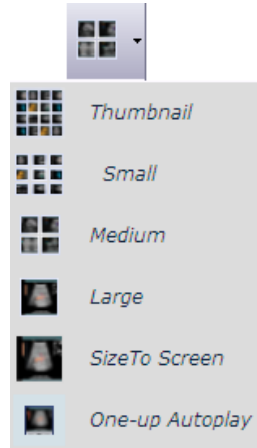
1. Image Sizes

To change the size and layout of the displayed images you can do any of the following:

- Select the menu item Series-> Change Image Size/ Presentation
- Press F7 to cycle thru all of the sizes
- Use the toolbar dropdown menu.

Clicking on the button once, moves to the next size. Or you can select a size from the drop-down list.

- If you are viewing a stress echo study, the list will include By Stage and By View.



2. Brightness & Contrast



Double-click on the image and if necessary, select the 'Contrast/Brightness' tab to readjust the window, level, or gamma correction as desired. If you export an image as AVI or BMP file, the exported image will keep the contrast settings. To apply the same settings to all images in the series, check the "Apply to All" button. Apply to All

3. Playing Clips

You can stop and start clips by right clicking on the clip. This may be easier than using the start /stop button on the controller below the clip.

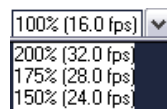
When the clip is stopped, you can use the "slider" to position the clip to a specific frame:



When the clip is playing the up and down arrows on the clip controller will speed and slow the clip:



You can reset the frame rate or margin the clip to a specific set of frames by double-clicking on the clip and using the margin and playback controls on the clip controller:



4. Measuring or cropping, annotating exporting in other formats

Double-click on an image to access tools for making measurements, annotating, cropping, exporting as BMP, AVI, etc.